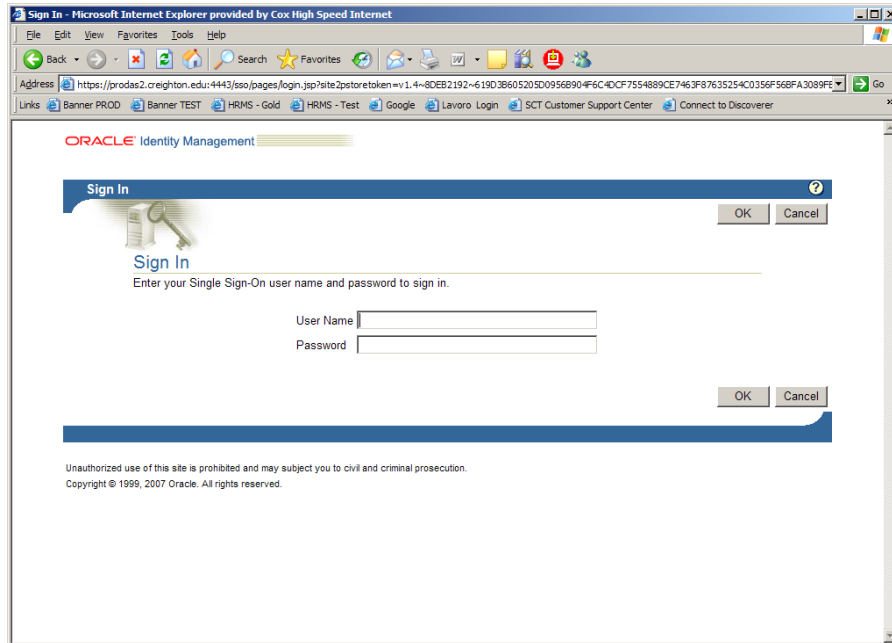


# Creating a Discoverer Plus Connection

1. Go to this url: <https://oradisc1.creighton.edu:8890/discoverer/plus>
2. Enter your **NetID** and **Blue Password** in the Single Sign-On form.



The screenshot shows a web browser window titled "Sign In - Microsoft Internet Explorer provided by Cox High Speed Internet". The address bar contains the URL: <https://prodas2.creighton.edu:4443/iso/pages/login.jsp?site2pstoretoken=v1.4-8DEB2192-619D3B605205D0956B904F6C4DCF7554889CE7463F87635254C0356F56BFA3089FE>. The page content includes the Oracle Identity Management logo and a "Sign In" header. Below the header is a "Sign In" section with a key icon and the text "Enter your Single Sign-On user name and password to sign in." There are two input fields: "User Name" and "Password". At the bottom of the form are "OK" and "Cancel" buttons. A footer contains the text: "Unauthorized use of this site is prohibited and may subject you to civil and criminal prosecution. Copyright © 1999, 2007 Oracle. All rights reserved."

3. Click on the **Create Connection** button and fill in the form:

Connection Name: **MyUserID@Disc** – whatever makes sense to you

Connection Description: Can be left blank

Locale: Leave as is

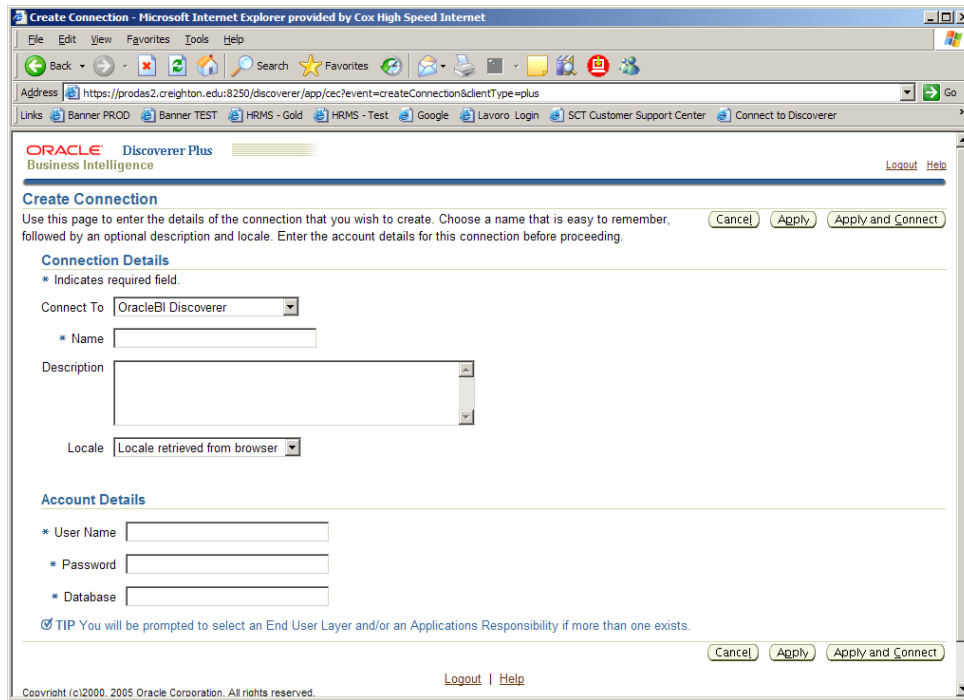
User Name: **MyDiscovererUserID** in capital letters

Password: **MyDiscovererPassword**

**Try the first three letters of your netid followed by the numbers backwards. If this does not work, please contact the Service Desk at 280-1111.**

Database: **disc**

Click **“Apply”** button.



4. Click on the **End User Layer** drop down box and select **BAN5\_EUL**  
Click **Continue**

